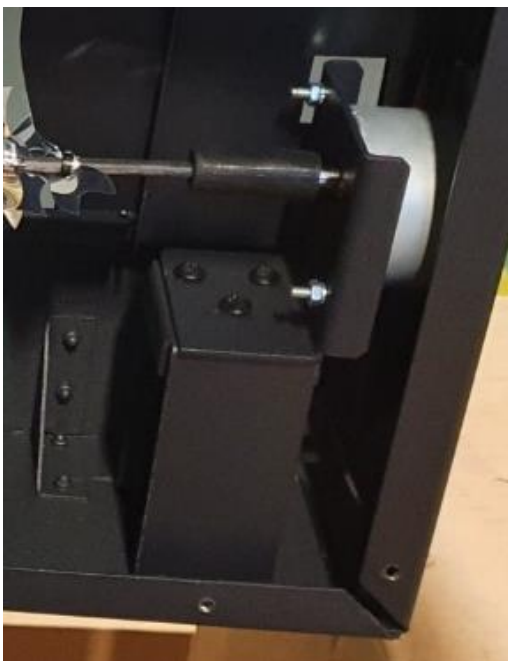


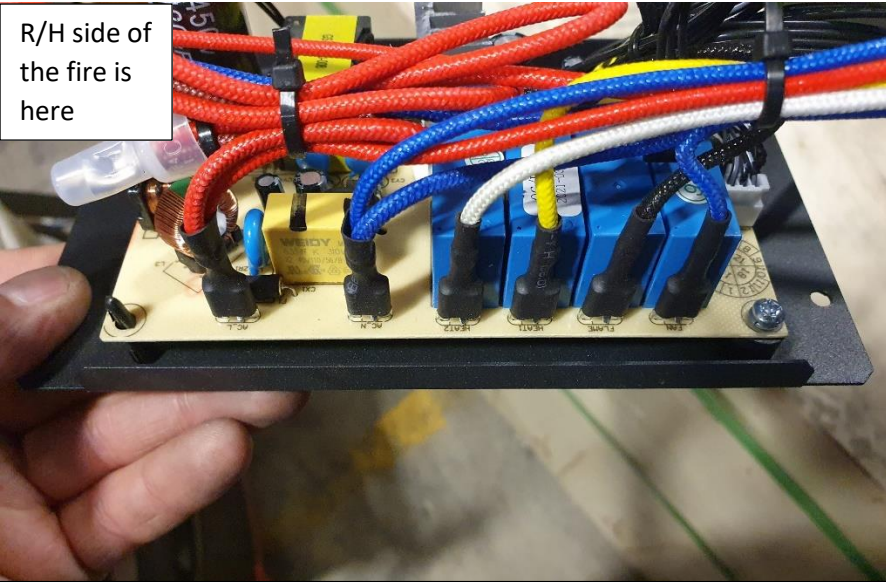


Rear spindle motor is on the left hand side of the fire and linked to the main board using 2 extension cables one goes from the motor to the top shelf and then from the top shelf to the main pcb board. The spindle motor is attached to a bracket which is fixed down by 3 screws. This spindle is plastic so don't bend and cant be bent back in to shape.

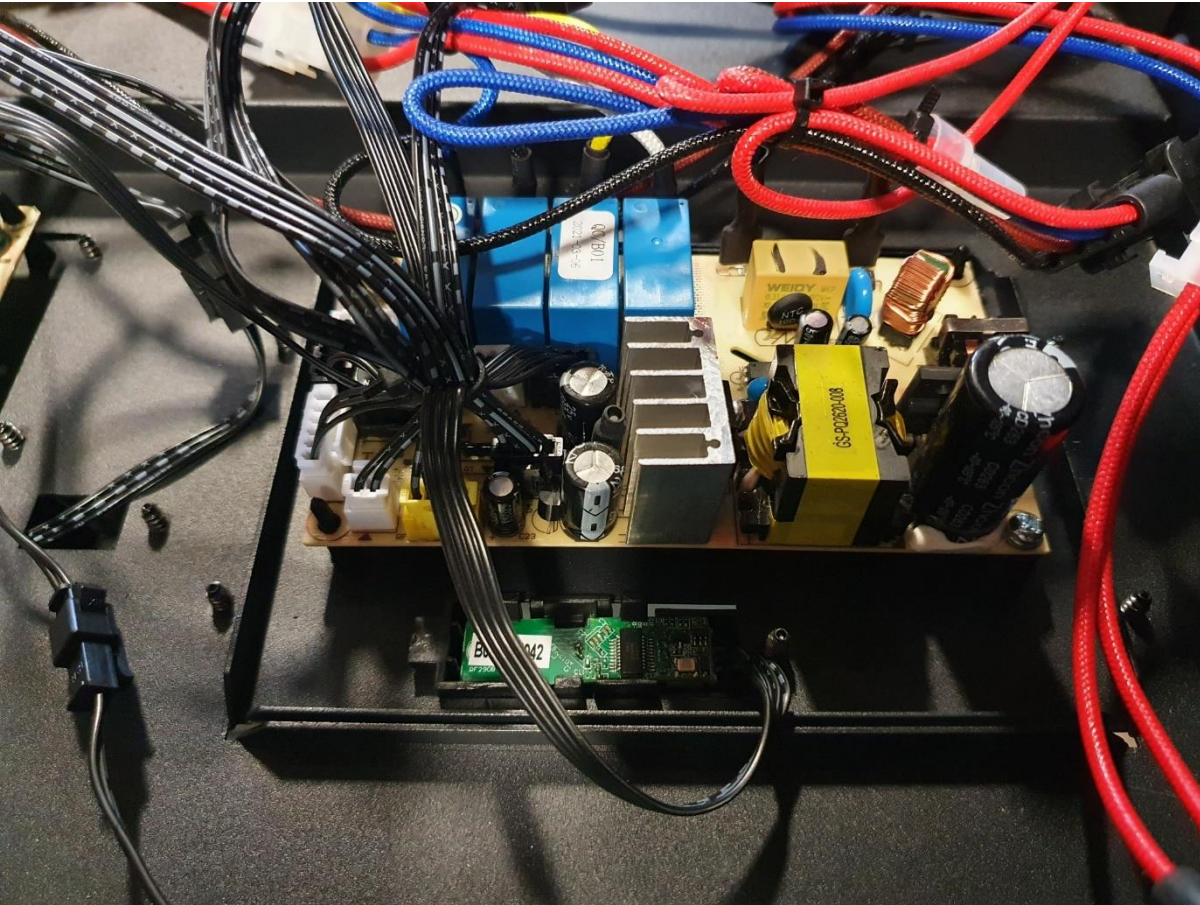


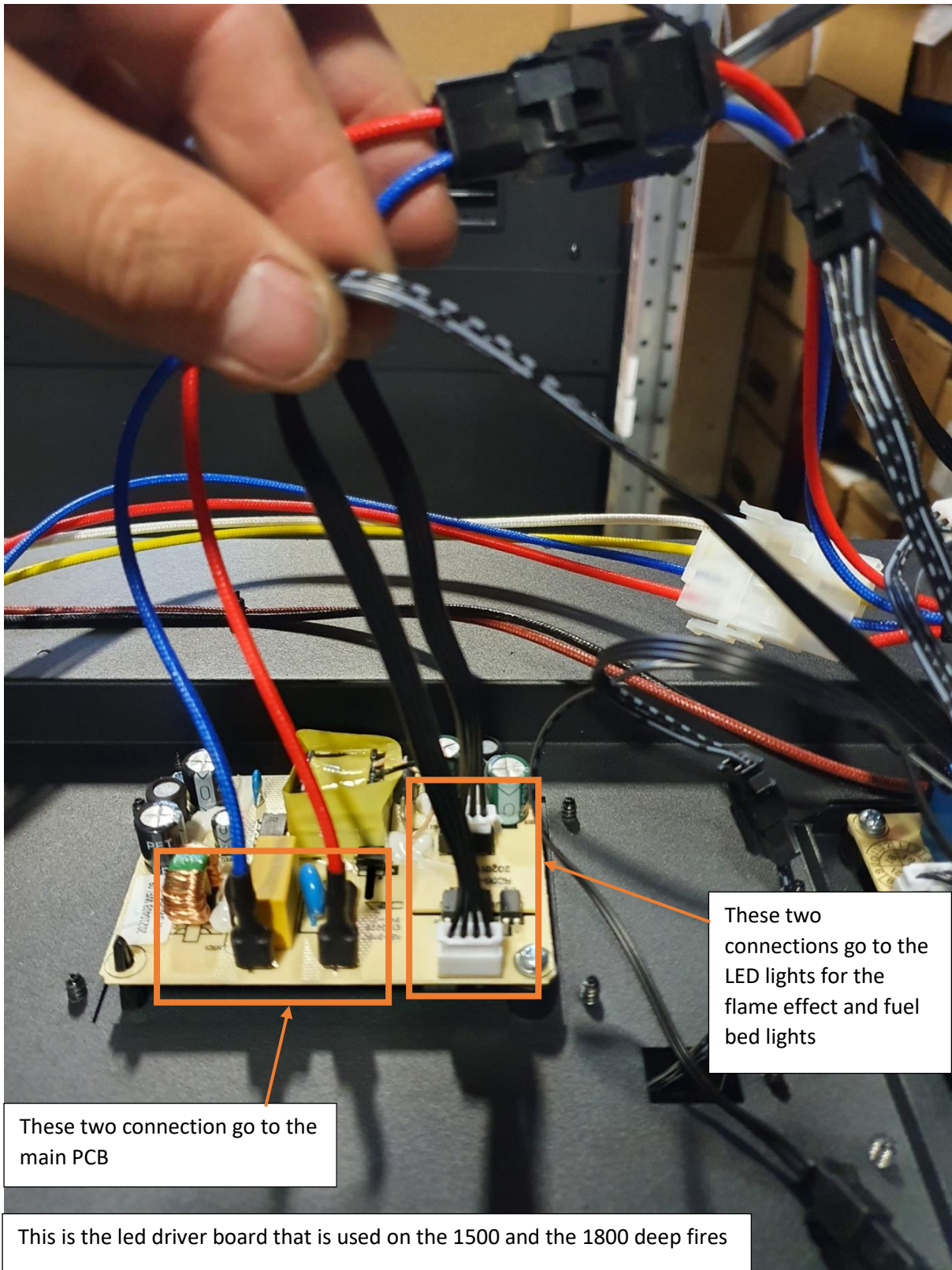
To disconnect the spindle motor you remove the spindle by pulling the spindle out of the rubber end of the motor and then unscrew the 3 screws in the base of the I shaped bracket then undo the cable connection

R/H side of
the fire is
here



This is the order the cables go in to the main pcb

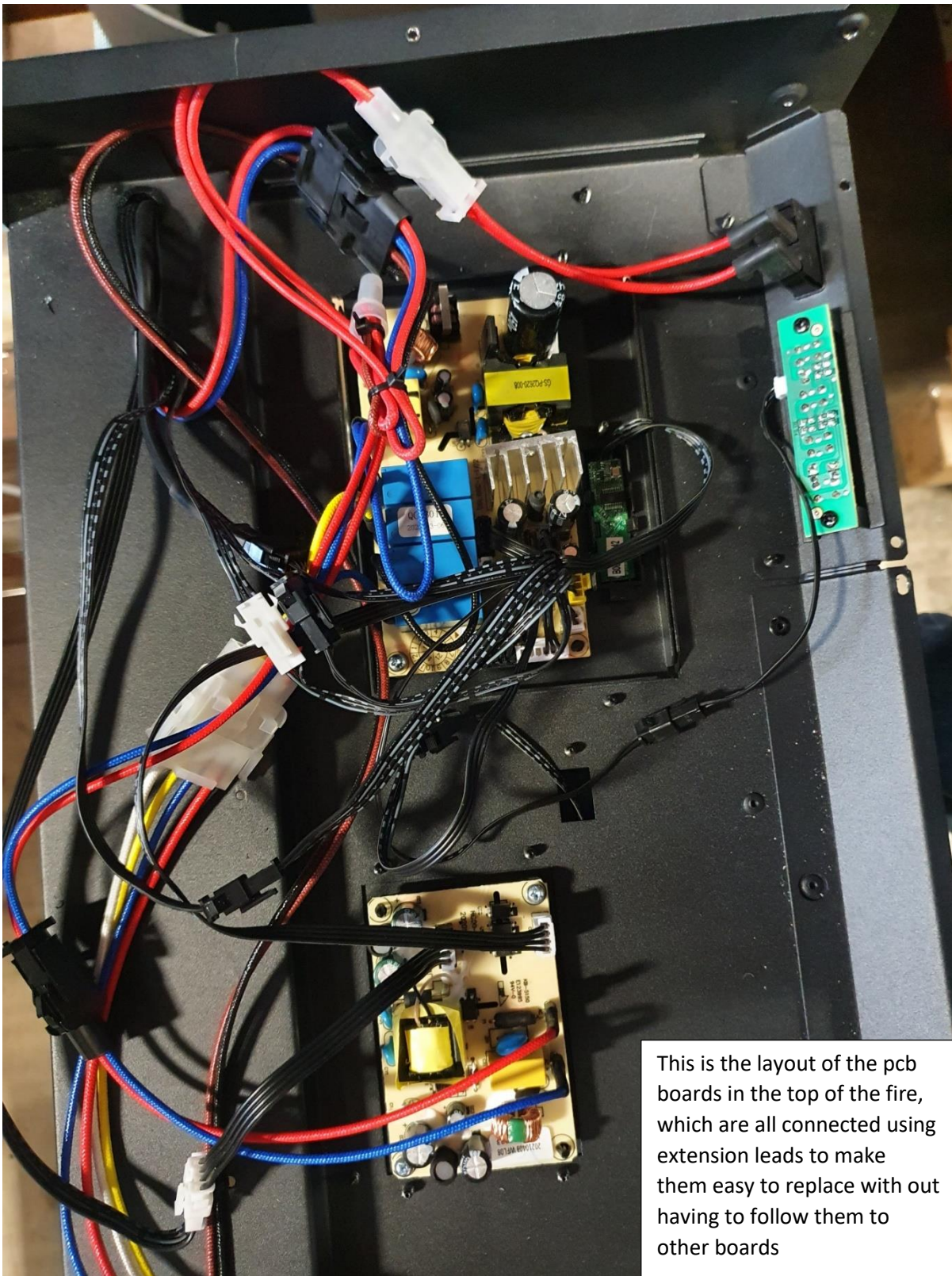




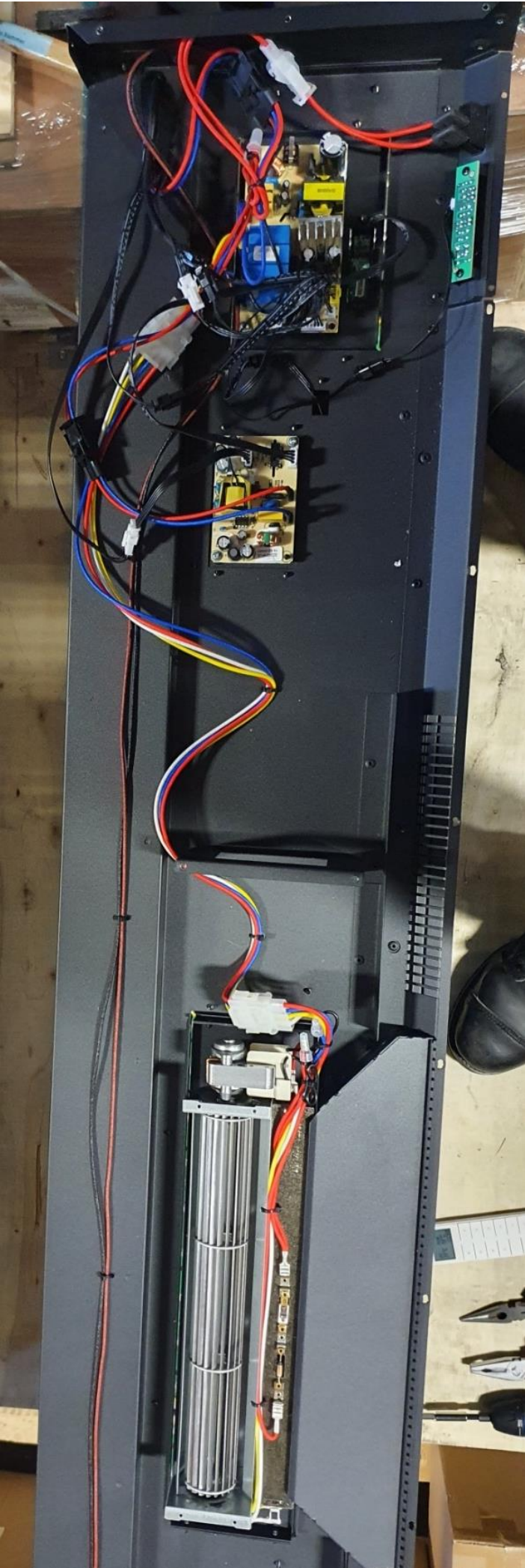
These two connections go to the LED lights for the flame effect and fuel bed lights

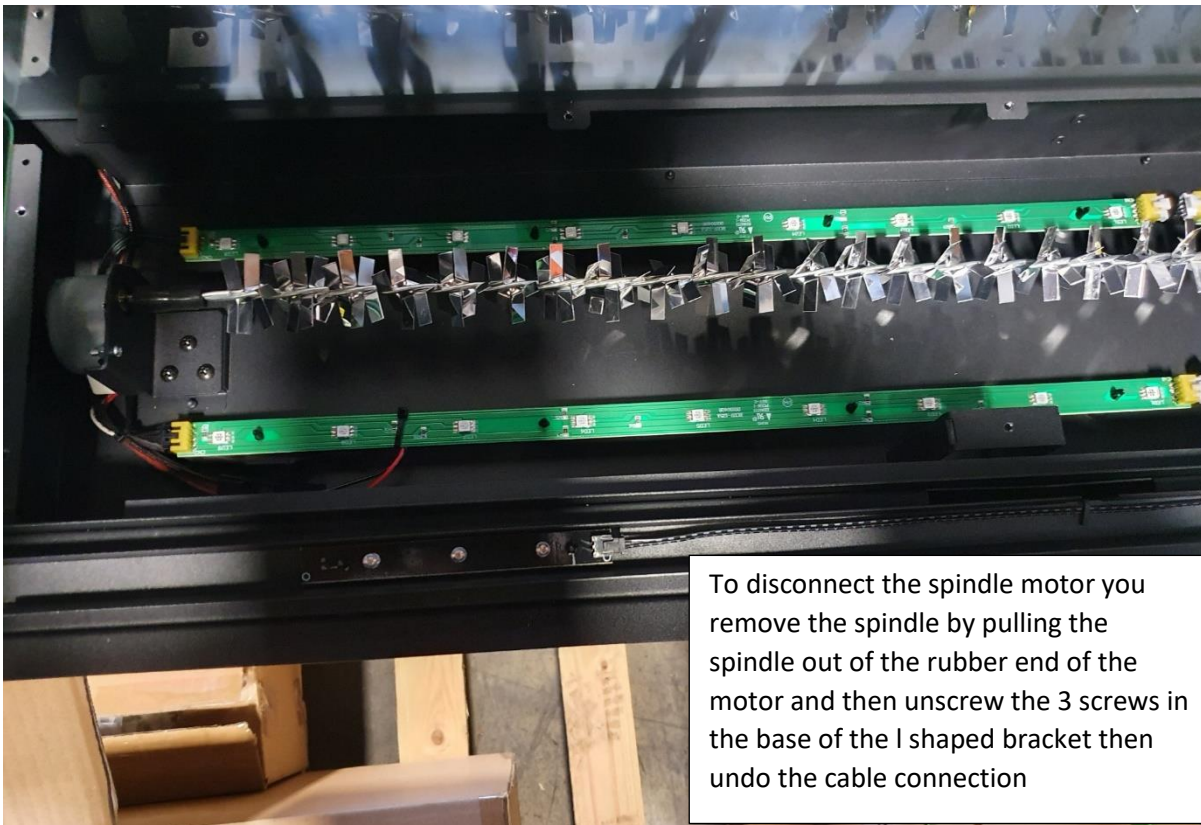
These two connection go to the main PCB

This is the led driver board that is used on the 1500 and the 1800 deep fires



This is the layout of the pcb boards in the top of the fire, which are all connected using extension leads to make them easy to replace with out having to follow them to other boards





To disconnect the spindle motor you remove the spindle by pulling the spindle out of the rubber end of the motor and then unscrew the 3 screws in the base of the I shaped bracket then undo the cable connection

This is the base of the fire here you will find the fuel end led's and spindle motor