

L2 SERIES

1725EBL-01

ENAMEL LINERS KIT

Installation Instructions

For use only with

**This kit is one of three required for complete liner installation
1725EBL-02 Roof panel kit & 1725EBL-03 Enamel panel infill Kit.**

For use with Valor model 1700 Linear Fireplace

Note: This kit must be installed or serviced by a qualified installer, service agency or gas supplier. These instructions are to be used in conjunction with the main installation instructions for the above listed models.

WARNING: If these instructions are not followed exactly, a fire or explosion may result causing property damage, personal injury or loss of life.

Kit Components

The complete 1725EBL-01 kit contains the following:

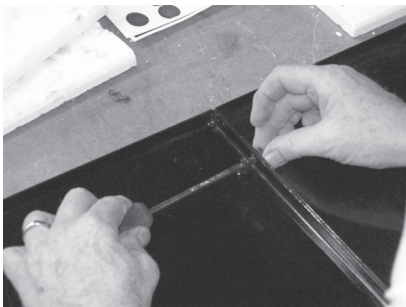
- 4002996EB – L/H enamel panel
- 4002997EB – R/H enamel panel
- 4003763EB – Rear enamel panels (3)
- 4001885 – #8 * 1/2" screw (4)
- 4001517 – #8-32 Hex nut (4)

Considerations

This kit is intended to use in conjunction with the 1725EBL-03 Enamel Panel infill kit on the Valor L2 Linear fireplace **when rear venting with less than 2 feet of vertical rise in the vent system.**

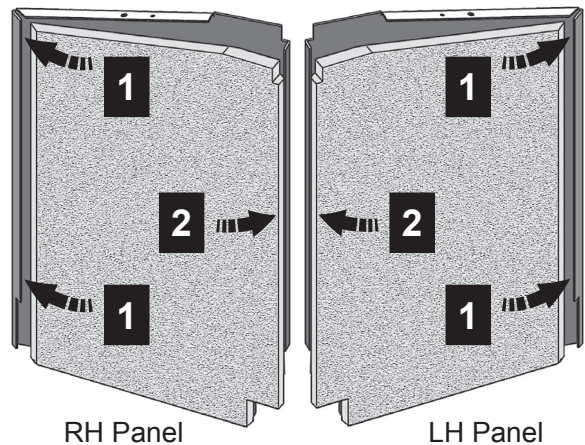
Liners Preparation

Unpack all panels and lay the 3 rear pieces face down on a clean smooth flat surface, align fixing holes; with screws and nuts (4 sets) secure panels together.



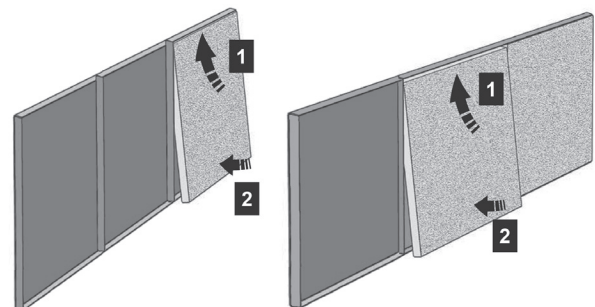
Insert the infill panel's beveled edge first into the enamel panel's beveled edge and press the infill panel into the square edge of the enamel panel.

Repeat for all panels. **Note: The rear panel assembly needs three infills.**



RH Panel

LH Panel



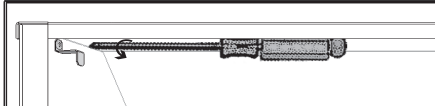
Rear Panels

Liners Installation

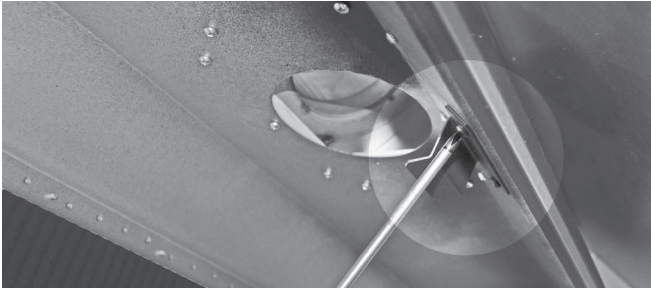
The liners install in the manner outline below.

Note: The enamel liners require additional preparation as indicated in instructions packed with the liners. Unpack the liner panels carefully.

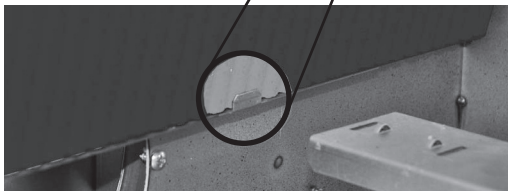
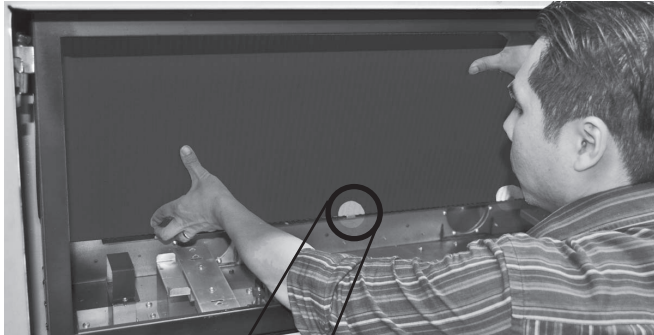
1. Inside the firebox, on the top of each side, release the screw of the side panel anchors (one per side) just enough to allow them to rotate.



2. Remove the top panel support located in the center of the firebox at the top edge (2 screws).



3. Place the rear panel, beveled edge on top, on the ledge above the ports of the rear of the firebox. The panel sits on the ledge behind the tabs.

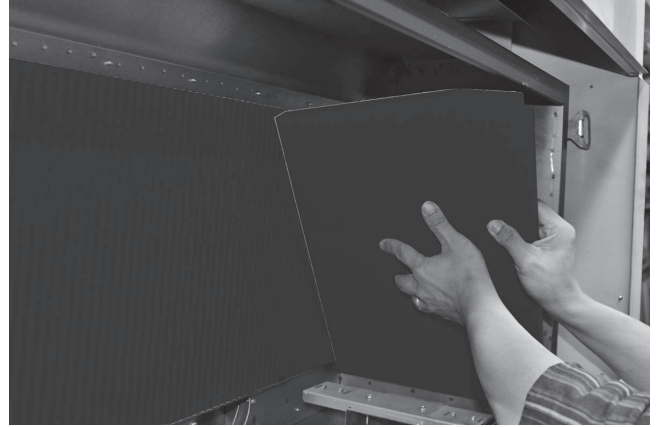


4. Place the left panel against the left wall of the firebox.

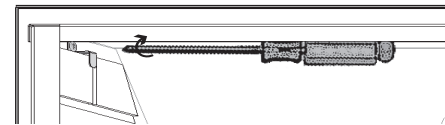


5. Place the right panel against the right wall of the firebox.

6. Tighten the side panel anchors on each side of the firebox.



7. Insert the top panel over the top of one of the side panels as far as possible. Rotate the other end of



the top panel upwards and pull it back to rest on the other side panel. Center the top panel and push as far back as possible to rest it on the rear panel.

NOTE: If the space is too tight, the top panel can be installed before the right panel. In this case, install the right panel last.

8. Reinstall the top panel support (2 screws).

