

# Valor® H3 1000K

Dec 2020

1/4

## Co-Linear Venting

### Applications

This appliance can be converted to install as a co-linear application. The co-linear portion of the vent system may only be installed within a solid-fuel burning appliance.

This appliance must not be connected to a chimney flue serving a separate solid-fuel burning appliance.

### Types of Installations

- Installation into an existing fireplace
- Partial installation into an existing fireplace
- Installation into an adjacent chimney

See the following pages for each installation details.

### Rules for Co-Linear Venting

- Maximum 40 feet vertical pipe
- Minimum 10 feet vertical
- Maximum offset 8 feet with liners at minimum 45 degrees from horizontal plane
- Restrictor: Not used for co-linear venting.

### NOTE

Co-linear flexible aluminum venting liners should be professionally inspected periodically for corrosion and damage and replaced when necessary. If the installation does not allow for future inspection or replacement of the flexible aluminum liners, then stainless steel vent liners are recommended.

# valor<sup>®</sup> H3 1000K

Dec 2020  
2/4

## Co-Linear Venting

### Complete or Partial Installations into an Existing Fireplace

#### Note

Flexible co-axial liners must only be installed within a solid fuel burning fireplace and chimney when converting at unit.

Required venting components:

- Valor 1000CLA Flex Co-linear Adapter Kit;
- Two lengths of 2-ply, 3" diameter flexible chimney liners approved for venting gas appliances;
- Co-linear termination kit and flashing or co-linear to co-axial adapter;
- High wind vertical vent terminal cap or low profile vertical termination.

### Complete Installation into an Existing Fireplace

The appliance can be installed completely inserted into the non-combustible cavity as illustrated below.

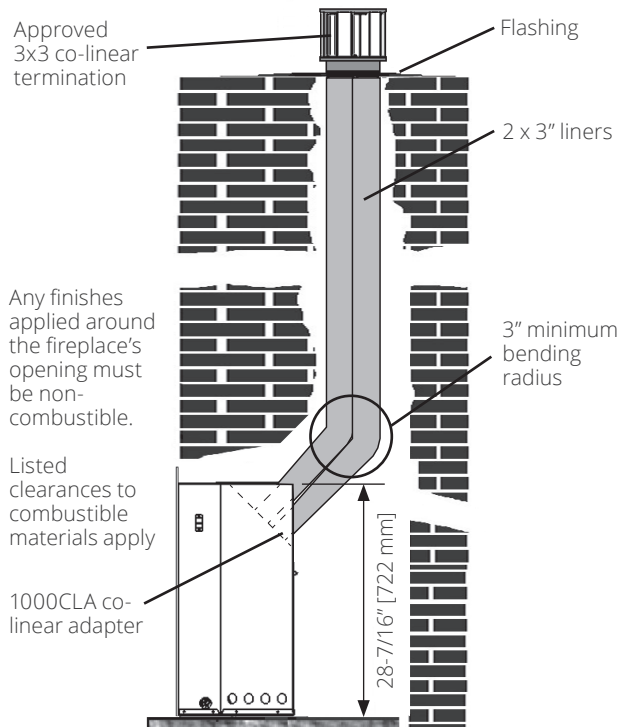
In this case, the firebox zero clearance standoffs supplied with the heater are not required.

### Partial Installation into an Existing Fireplace

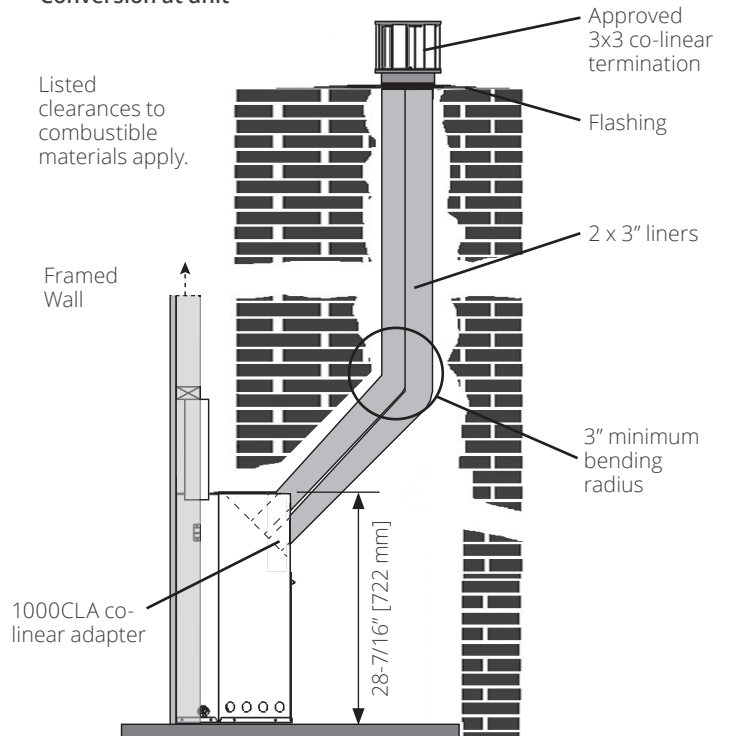
The appliance can be partially inserted into the non-combustible cavity as illustrated below.

In this case, the appliance must be installed **within a fully framed wall**, consistent with a New Construction application as described in the appliance's Installation manual.

Co-Linear installation fully inserted into existing fireplace - Conversion at unit



Co-Linear installation partially inserted into existing fireplace - Conversion at unit



# valor<sup>®</sup> H3 1000K

Dec 2020  
3/4

## Co-Linear Venting

### Installations into an Existing Adjacent Chimney

The appliance can be adapted to co-linear applications using an adjacent existing chimney.

#### Note

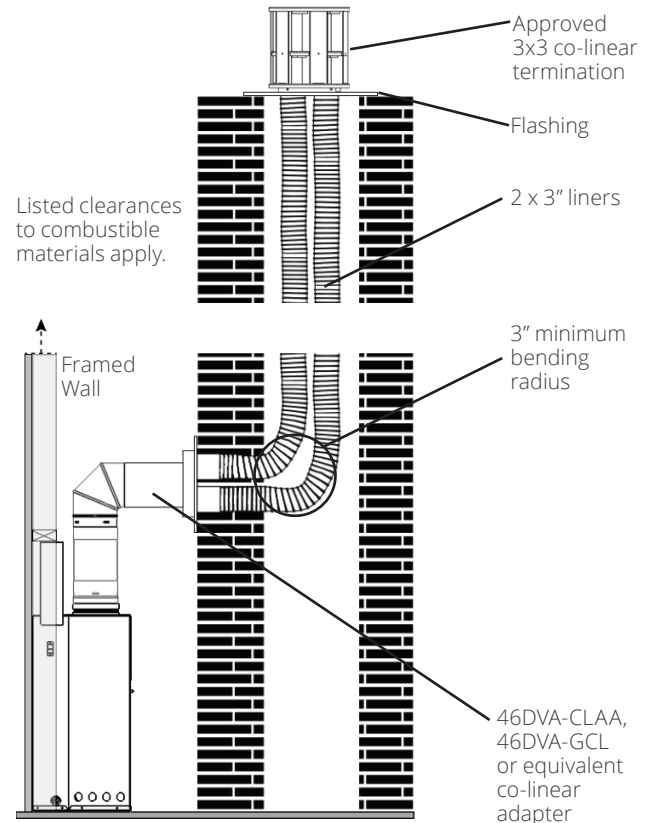
Flexible co-axial liners must only be installed within a solid fuel burning fireplace and chimney when converting at unit.

Required venting components:

- Approved Co-Axial to Co-Linear appliance adapter such as 46DVA-CLAA or 46DVA-GCL;
- Two lengths of 2-ply, 3" diameter flexible chimney liners approved for venting gas appliances;
- Co-linear termination kit and flashing or co-linear to co-axial adapter;
- High wind vertical vent terminal cap or low profile vertical termination.

The appliance must be installed **within a fully framed wall cavity**, consistent with a New Construction application as described in the appliance's Installation manual.

Co-Linear installation using nearby/adjacent existing chimney - Conversion at chimney

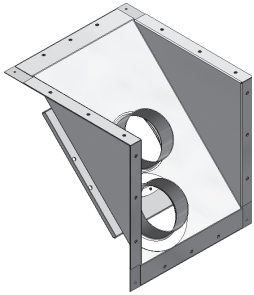


# valor<sup>®</sup> H3 1000K

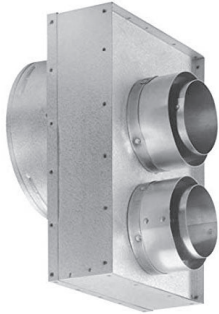
Dec 2020  
4/4

## Co-Linear Venting Accessories

### Co-axial to Co-linear Adapters



1000CLA

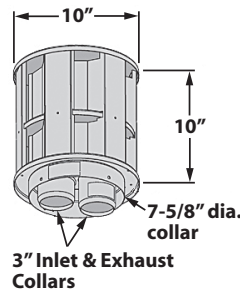


46DVA-GCL

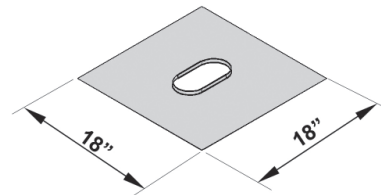


46DVA-CLAA

### Examples of Co-linear Terminal Configurations



Co-Linear Terminal (typical)



Flashing Kit

### Alternate Co-linear to Co-axial Conversion at Terminal



Co-axial Terminal Cap

With...

